

# **S/M FLECKVIEH CATTLE**

## **Private Treaty Bull Sale**

### **w/ a March 6 Telephone Bid-off**

**Jeff Sorenson**

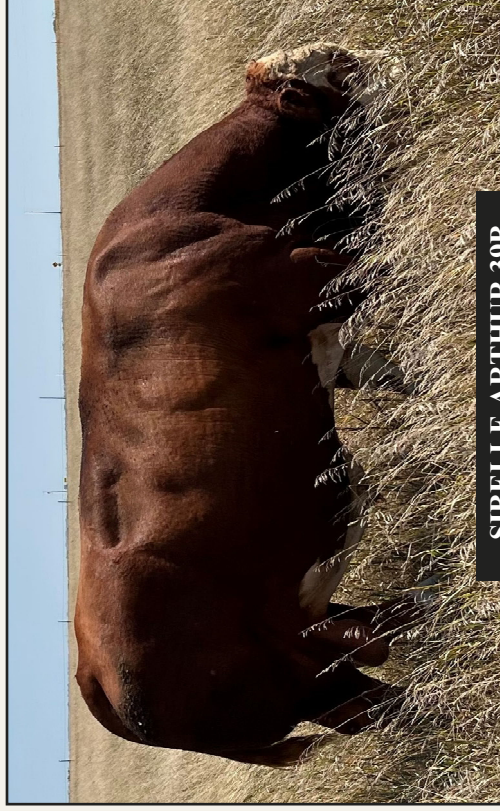
48186 257th Street  
Garretson, South Dakota 57030

[sorenson@augie.edu](mailto:sorenson@augie.edu)

605-359-8728 (cell)

[www.smfleckvieh.com](http://www.smfleckvieh.com)

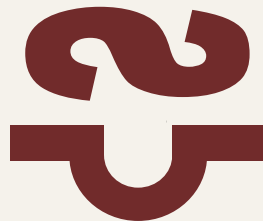
# 25



**SIBELLE ARTHUR 39B**

# S/M FLECKVIEH CATTLE

## 2023 Sale Bulls



Welcome to the 2023 lineup of sale bulls at S/M Fleckvieh Cattle. These bulls are the product of **our 48th year** breeding Fleckvieh Simmental cattle, beginning in 1975.

The bulls sell by private treaty beginning in late February. They are pre-priced (see pg 15), so that if you are the only person asking for that bull by **noon on March 6**, he's yours at that price. A new wrinkle this year that was asked for by our return customers, is that if more than one person asks for a bull, we will contact you to arrange a **telephone bid-off after 6 pm on the evening of March 6**—only among the customers who have asked for that bull.

A half-down deposit will hold your bull until we semen check in late April. We'll give him his spring pre-breeding shots, including Bovishield Gold, Pinkeye and Footrot vaccines, and deliver to you within 250 miles.

### *Expected Progeny Differences (EPDs)*

We pay close attention to EPDs, aiming for a balance of the most important economic traits. After generations of breeding to lock in dependable genetics, you will see the results in the balanced EPDs of these bulls. There are calving ease bulls that also have good growth and maternal EPDs, and there are high growth bulls with useful calving ease and maternal trait EPDs.

A sample EPD chart  
S/M Kingston K071

CE	WW	YW	MCE	MWW	API	TI
13	67	96	7	75	126	72
3	65	60	5	30	1	10

On this sample chart, the top numbers are the raw EPDs for each trait as calculated by the American Simmental Association. The bottom row of numbers are the animal's ranking among all fullblood cattle in the breed.

For example, this bull is in the top 3% for Calving Ease, the top 60% for Yearling Weight, his Maternal Calving Ease is in the top 5%, and his All Purpose Index is in the top 1% for fullblood cattle in the ASA database.

#### Explanation of the EPD Chart

CE = Calving Ease Index  
WW = added pounds Weaning Weight  
YW = added pounds Yearling Weight  
MCE = Maternal Calving Ease Index  
MWW = added pounds Maternal Weaning Weight  
API = All Purpose Index  
TI = Terminal Index

The bottom number on the chart (with each bull) reflects the rank of that EPD, eg. an EPD ranking 10 is in the top 10% of Fullblood Simmental bulls.

## *Fullblood Fleckvieh Cattle*

We breed only Fullblood Fleckvieh Simmental cattle, whose genetics trace to the original Fleckvieh of Germany and Austria where these stout beef-type Simmental cattle originated. Being Fullblood offers the maximum hybrid vigor when crossed with other breeds of cattle.

The Fleckvieh female's moderate frame, natural easy fleshing and big volume capacity help her stay in good condition and rebreed on schedule year after year, on grass and poorer roughages.

## *Our Breeding Goals*

We focus on economic traits that add value:



- Type – big-volume, deep-fleshed cattle that are soggy, long and thick.
- Calving ease, both direct and maternal — in a range that works under commercial conditions.
- Females – tight udders with small teats, feminine, sound feet and legs, with the depth and barrel to thrive on grass and corn-stalks.
- Disposition – docile and easy to handle.
- Polled – as one of several important economic traits.
- Color – non-diluted dark red with lots of protective pigment.

Our Fullblood Fleckvieh Simmentals are run like commercial cattle, so we know how they work in the real world. We select for performance, disposition and soundness, and grow out only the best as sale bulls. They are developed slowly on a high-roughage diet of free-choice grass hay, a half oats/ corn grain mix, and access to a Flaxlic mineral tub that boosts semen quality. They grow well but stay in their working clothes, so that they're sound, fertile, ready to go to work — and will stand up for years of service for you.

---

Please check out our website at:  
**[www.smfleckvieh.com](http://www.smfleckvieh.com)**. Text, email or call to talk about your program, and ours, and how we can help you breed for profit.

*Jeff Sorenson*

**605-359-8728** [sorenson@augie.edu](mailto:sorenson@augie.edu)





## S/M KILOVOLT K681

4046717

3/26/2022 BW 110 AWW 797/ 108 AYW 1279/ 106 Horned

Virginia Walker 97W  
Sibelle Arthur 39B  
Sibelle India 25W  
Crossroad Radium 789U  
S/M Zaila F681  
JNR Petra II

S/M Kilovolt K681 is a big, soft, soggy chunk of a bull — much like his maternal brother that sold last year to Chad Ledbetter in Oklahoma. His Radium sired dam is feminine in her type, and consistently productive.



Maternal brother  
S/M Judah J681

Top weaning and yearling performance. A teddy-bear disposition. Dark red pigment down to his big black hooves. He will pack the pounds on his calves, without sacrificing anything in thickness, easy-keeping, and productivity in his daughters (I wrote the very same thing last year about his brother).

Of all the Sibelle Arthur 39B calves over eight successive calf crops, this bull reminds me most of his powerful sire. Herd bull time.

Tested Non-Diluter

CE	WW	YW	MCE	MWW	API	TI
2	71	94	-1	73	102	64
85	50	65	95	45	40	50





## S/M KILOWATT K561

4046692

3/25/2022 BW 98 AWW 754/ 102 AYW 1250/ 103 Horned

Virginia Walker 97W

Sibelle Arthur 39B

Sibelle India 25W

IPU Radium 20A

S/M Karine D561

S/M Karinne B541

If you're looking for consistent performance, beef-type bulls as attractive as they come—these two 3/4 brothers by Sibelle Arthur 39B will turn your head.

Fully pigmented with black hooves, so dark red he LOOKS almost black. A heads-up herd bull appearance, yet he's quiet and easy to be around. A full brother (pictured) is working for Kaleb Kracht, Edgerton, MN.

His dam D561 is one of the prettiest cows to grace our pastures—an ultra-feminine female that kicks out these masculine, powerful bulls—just like they're supposed to do.

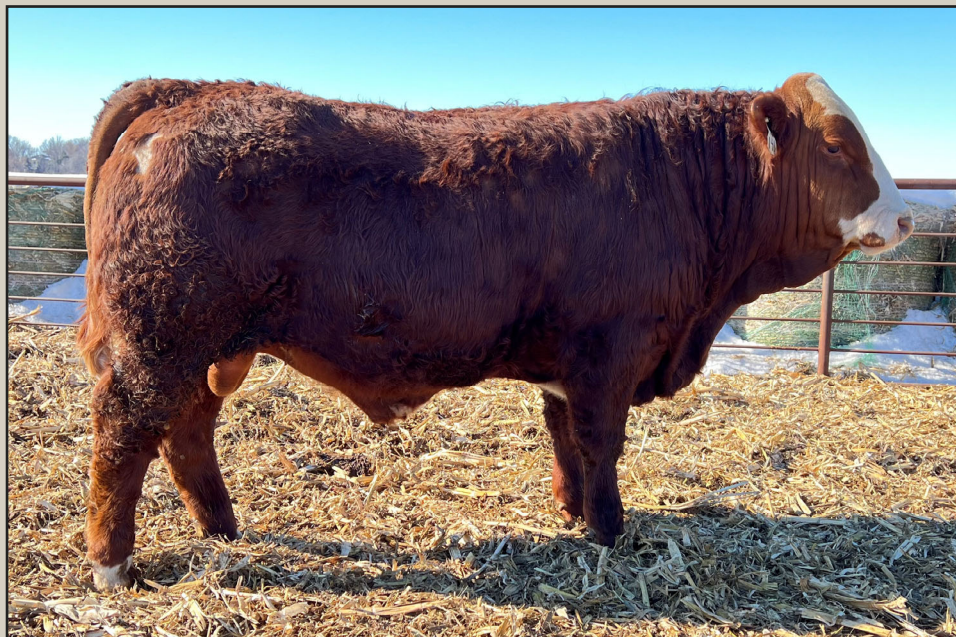


S/M Karine D561



Tested Non-Diluter

CE	WW	YW	MCE	MWW	API	TI
4	69	89	2	72	99	64
65	60	80	65	55	50	55



## S/M KEYSTONE K141

4046727

3/14/2022    BW 100    AWW 706/ 96    AYW 1226/ 101    Polled

Double Bar D Jury 156B  
Double Bar D Pol Manchester  
Double Bar D Petra 189B

Anchor T Legend 7H  
S/M Franchesca B141  
S/M Franchesca Z121

Here is S/M Keystone K141, a maternal brother to S/M Diesel D141 (pictured)—a bull we bred, the most consistent calving ease sire we have used, and sire of some beautiful females here as well.

No wonder he's good—dammed by my all-time favorite female, the polled, productive Anchor T Legend daughter, S/M Franchesca B141.

K141 himself is a deep mahogany red down to his black feet. He's wide-topped, soggy and deep-sided—in type he's much like his popular Canadian sire Double Bar D Pol Manchester.

Tested Non-Diluter



S/M Franchesca B141



CE	WW	YW	MCE	MWW	API	TI
5	73	110	4	74	109	70
55	40	25	45	35	15	20





## S/M KEYNOTE K515

4046703

3/13/2022

BW 94

AWW 707/ 96

AYW 1103/ 91

Horned

Double Bar D Jury 156B

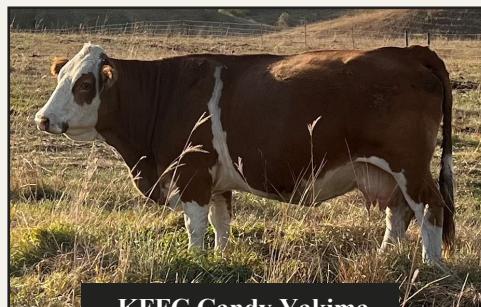
Double Bar D Pol Manchester

Double Bar D Petra 189B

KFFC Yakima Levi

KFFC Candy Yakima

KFFC Ula Spiro



KFFC Candy Yakima

The second of two Double Bar D Pol Manchester sons—a sire we imported semen from Quebec for the deep, thick, big-bodied type, and dark red heavily pigmented coat color he fixes (as I noted in his footnotes in Reference Sires).

S/M Keynote K515 is dammed by KFFC Candy Yakima, the matron of a cow family we added from the Keith Franck dispersal (which I think was Keith's best cow family and dam to a young herdsire now at Great Guns Texas). These females are moderate in stature, feminine, and out-produce themselves. K515 is a maternal brother to the dam of S/M Kingdom K733. The quality of these calves tells me that yes, this cow family was indeed a good investment.

K515 is a deep dark red, has black hooves, is almost entirely pigmented, and moderate in type like his dam.

Tested Non-Diluter

CE	WW	YW	MCE	MWW	API	TI
1	66	87	1	74	95	65
90	70	85	80	35	65	45



## S/M KIEFER K361

4046729

3/28/2022 BW 79 AWW 733/ 100 AYW 1206/ 100 Homozygous Polled

Sibelle Dirty Harry 25Z

FGAF Granger 060G

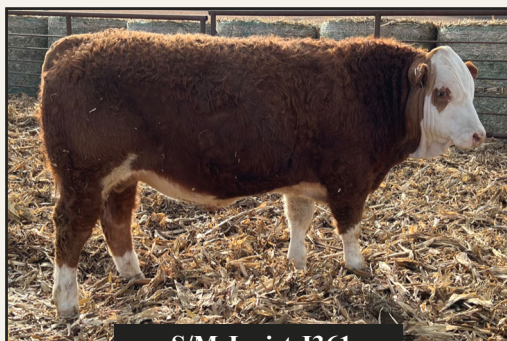
Tryon Bonnie FF2E

Anchor T Legend 7H

S/M Ursa D361

PHS Yuma

Here's a homozygous polled heifer-bull candidate for you. Calving Ease and All-Purpose Index EPDs that are earned by generations of calving ease sires are stacked end on end in this bull.



S/M Jurist J361

S/M Kiefer K361 is smooth in his make-up, and long, long, long. His type comes from his polled Anchor T Legend dam (note an almost identical type in his maternal brother S/M Jurist J361 (pictured above). He arrived with a modest birthweight, yet he knows how to grow—the kind of birth to finish spread that we aim for.

These homozygous polled heifer-bull candidates, as royally bred as this guy is, are a rarity to find.

Tested Non-Diluter

CE	WW	YW	MCE	MWW	API	TI
14	64	90	8	71	113	65
2	80	80	3	60	10	45





## S/M KONRAD K551

4046713

4/07/2022 BW 97 AWW 803/ 109 AYW 1250/ 103 Homozygous Polled

Sibelle Dirty Harry 25Z

FGAF Granger 060G

Tryon Bonnie FF2E

Emperor

S/M Addie C551

S/M Anna U581

Another homozygous polled bull, S/M Konrad K551 is more of a power bull. He has some extra frame, extra length, extra muscle, extra pounds to him.

Please note that he tested positive for diluter—so is going to work very well on a herd of red cows.

Year after year his feminine dam punches out bulls with this kind of power. Note the powerful, soggy son S/M Johann J551 (pictured) that she produced last year. It's fun when a pretty female like this, dams bulls this masculine and strong.



S/M Addie C551



Tested Diluter Carrier

CE	WW	YW	MCE	MWW	API	TI
5	75	102	1	73	94	66
50	30	45	80	45	70	35



## S/M KURTIS K122

4046722

4/14/2022

BW 103

AWW 753/ 102

AYW 1257/ 104

Polled

Sibelle Dirty Harry  
FGAF Granger 060G  
Tryon Bonnie FF2E  
FSS Xtra Stout 20X  
S/M Franchesca Z122  
S/M Franchesca W191

The youngest bull in our offering, S/M Kurtis K122 is another (and the last) good growth bull produced by the old matriarch of a top cow family here, S/M Franchesca Z122.



S/M Jonah J122

She has been a powerhouse cow for us, every son a sale bull (see her last year's calf S/M Jonah J122 pictured above) and several daughters retained as some of our best females.

The bull is a stretchy, bigger framed calf considering his age—yet deep and thick enough to balance it all out in an attractive looking package.

Considering how good this old cow was and how gorgeous are our first daughters of FGAF Granger 060G calving now—I would use him to breed for his daughters and keep every one of them.

Tested Non-Diluter

CE	WW	YW	MCE	MWW	API	TI
7	62	83	4	70	88	60
35	85	90	35	70	85	80





## S/M KAISER K201

4046695

2/20/2022

BW 68

AWW 718/ 98

AYW 1217/ 101

Polled/S

ABR Sir Arnold's Image

Sanmar Polled Pharao 12P

Sanmar Pol Teardrop 12M

S/M Diesel D141

S/M Julia H201

S/M Juliette X201

Another heifer-bull candidate, S/M Kaiser K201 arrived with a small birth weight, unassisted out of a first-calf heifer. He has two generations of easy calving sires behind him. Both Sanmar Polled Pharao 12P and S/M Diesel D141 we completely trust on heifers and have never pulled or assisted a calf by these sires.



S/M Kaiser K201  
at weaning

Kaiser has grown into a bigger, longer, stretchier-made calf for a heifer-bull candidate. He has developed small, loose scurs that we've left on. He has a unique personality—very friendly and curious, he stands by the gate (like in his photo) and “talks” to us.

We've found that these bulls, created by using generations of calving ease sires on our heifers, are justifiably pretty popular.

Tested Non-Diluter

CE	WW	YW	MCE	MWW	API	TI
6	67	90	4	69	108	67
40	65	75	35	75	20	35



## S/M KINGDOM K733

4046690

3/10/2022 BW 88 AWW 727/ 99 AYW 1255/ 104

Horned

Anchor D Raptor 392C  
Kuntz Kingpin 2H  
Kuntz Miss Moses 308A  
KFFC Cade Argonne  
KFFC Engrid Cade  
KFFC Candy Yakima

**What a chunk!**

We were surprised when we weighed bulls for yearling weights that this solid-made bull had the heaviest actual yearling weight in the bull pen. It demonstrates

what we've claimed for years about these Fleckvieh cattle—that pounds of beef are found not in bone and height—but in length, depth and width.

S/M Kingdom K733 is the second sale bull this year from the small cow family headed by KFFC Candy Yakima that we purchased from the Keith Franck dispersal. Like this bull, those females are moderate framed—but powerful for the pounds of beef in them.

He's also a testament to our new Kuntz Kingpin 2H sire, and the balanced spread calving ease, thickness and growth that he has and passes to his calves.



S/M Kingdom K733  
at weaning

Tested Non-Diluter

CE	WW	YW	MCE	MWW	API	TI
8	72	99	4	79	98	66
30	45	50	40	10	55	35





## S/M KINGSTON K071

4046699

3/25/2022 BW 79 AWW 727/ 99 AYW 1219/ 101 Horned

Anchor D Raptor 392C  
Kuntz Kingpin 2H  
Kuntz Miss Moses 308A

PHS Bank Roll 345B

S/M Rote E071

S/M Rebecca T071

If you like chrome and good cattle, you've gotta love this bull.

As Kingpin consistently does with his calves, he began life small then took off about mid-summer and has grown into just a beautiful, big-haired, big-topped, big-middled beef machine.

He's a heifer-bull candidate too, born at 79 pounds from a mature cow and generating a +13 calving ease EPD. In fact, with the light birthweights from Kingpin's first calf crop we opted to use him on heifers this year (and when we saw how his calves weaned off wished we'd run him with the whole herd instead).

His dam S/M Rote E071, pictured above, is a lovely young cow that is moderate in her type, as thick, soft and easy-doing as they come.



S/M Rote E071

Tested Non-Diluter

CE	WW	YW	MCE	MWW	API	TI
13	67	96	7	75	126	72
3	65	60	5	30	1	10



## S/M KANDU K592

4046728

3/24/2022

BW 94

AWW 786/ 107

AYW 1260/ 104

Polled

Anchor D Motown 865E

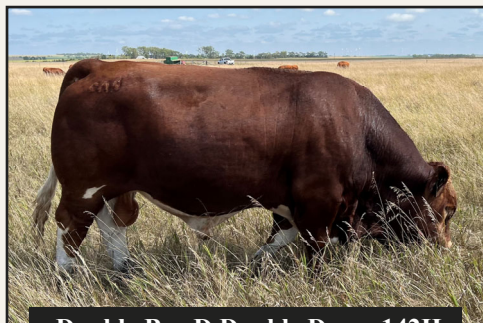
Double Bar D Double Down 142H

Double Bar D Classy 110C

PHS Bank Roll 345B

S/M Kaitlyn G592

S/M Kathleen A532



Double Bar D Double Down 142H

When it came time to name this K592 bull calf, the only polled son of our new Double Bar D Double Down 142H sire—Kandu seemed the natural fit—given that we purchased this amazing hulk of a sire to “Double Down” on the best of what Fleckvieh cattle “Kan du.”

S/M Kandu K592 is dammed by a young, feminine and milky PHS Bank Roll 345B daughter—going back to an old cow family here that originates from an Arnold Bros. family that we began with in the 1980’s.

He’s a big calf, lots of middle, and lots of growth to him as we’d expect. All that, with a polled head, in an attractive, heavily pigmented powerhouse of a bull. Expect extra pounds of beef, and attractive, productive, milky daughters as well.

Tested Non-Diluter

CE	WW	YW	MCE	MWW	API	TI
5	79	117	0	78	105	67
60	15	10	90	15	30	35

# **S/M FLECKVIEH CATTLE**

## **2023 Private Treaty Bull Sale Prices**

Thank you for taking a look at our 2023 Sale Bulls. They are available for sale by private treaty, at a pre-set price, **with a bid-off on March 6** for any bulls that are asked for by more than one person. A check for half down will hold your bull until late April, when we semen check and give a breeding soundness exam, give spring breeding shots and can deliver up to 250 miles to you.

These are the prices of the 2023 bulls:

S/M Kilovolt K681	\$ 5,000
S/M Kilowatt K561	\$ 4,000
S/M Keystone K141	\$ 5,000
S/M Keynote K515	\$ 3,000
S/M Kiefer K361	\$ 5,000
S/M Konrad K551	\$ 3,000
S/M Kurtis K122	\$ 3,500
S/M Kaiser K201	\$ 4,000
S/M Kingdom K733	\$ 4,000
S/M Kingston K071	\$ 4,000
S/M Kandu K592	\$ 4,000

*Jeff Sorenson*

**605-359-8728      [sorenson@augie.edu](mailto:sorenson@augie.edu)**

**website: [www.smfleckvieh.com](http://www.smfleckvieh.com)**



# REFERENCE SIRES

## SIBELLE ARTHUR 39B

2981208      3/19/2014  
 BW 112      AWW 907  
 YW 1613      Horned  
 Non-Diluter

Sibelle Arthur 39B consistently sires what we invested in this great sire to contribute to our genetics: volume, power and thickness. His sons are powerful beef bulls.

Daughters are feminine with excellent udders, and

pass on his beef type to their calves. Arthur in his ninth breeding season was still sound, big-footed, and in great shape—and his ninth calf crop is arriving now.

Arthur has two sons on offer this year. Semen is available for the US, Canada, Mexico and the EU.



CE	WW	YW	MCE	MWW	API	TI
7	70	88	4	67	112	65
30	60	60	45	85	10	45

## FGAF GRANGER 060G

3739260      1/31/2019  
 BW 88      AWW 785  
 YW 1361      Polled  
 Non-Diluter

This is our second set of calves by FGAF Granger 060G. We purchased Granger as the high-selling bull in Ferme Gagnon's 2020 sale to moderate frame and add thickness. He does that. But he's also easy calving, has powerful growth far beyond his own phenotype, and his first daughters calving now are just gorgeous.

Granger is sired by Sibelle Dirty Harry, who makes his progeny stout, soft and soggy. His polled dam is a deep-sided, thick yet feminine young female at FGAF that has now produced four top sale bulls for them.

US semen available.



CE	WW	YW	MCE	MWW	API	TI
13	67	95	7	71	115	68
3	65	60	4	60	10	25



# REFERENCE SIRES

## KUNTZ KINGPIN 2H

3968312 1/05/2020  
BW 104 AWW 836  
YW 1666 Polled  
Non-Diluter

Kuntz Kingpin 2H stood out as the most powerful, deep and stout polled Fleckvieh bull of the 2021 sale season. His dam Miss Moses is a broody tank of a cow, with three sons serving in purebred herds across Canada.

Wow! Check out his EPDs based on his first crop of calves! Kingpin is proving to be a breakthrough sire, with excellent calving ease—AND performance/ power. Sons are uniformly thick, beefy and attractive. Daughters are classy, big-barreled females that we can hardly wait to breed and see become cows.

US semen available.



CE	WW	YW	MCE	MWW	API	TI
9	90	135	3	86	121	81
15	1	1	60	1	2	1

## DOUBLE BAR D DOUBLE DOWN 142H

3968313 3/05/2020  
BW 94 AWW 1055  
YW 1575 Horned  
Non-Diluter

We renamed this massive son of Anchor D Motown, for what we expected him to do for us: Double Down on the thickness, muscle, barrel and correctness of this young bull.

His sire Motown has earned a reputation for calves that are big-middled, deep-fleshed, the ideal Fleckvieh type. Double Down was number one for both weaning and yearling performance among his herdmates in the Double Bar D herd, no accident as he's also out of a big-bodied, high-performing Juggernaut daughter. His first calves born in 2022 DO have his power. They ARE thick and correct. Only one bull this year but more are arriving now.



CE	WW	YW	MCE	MWW	API	TI
3	87	126	-3	80	105	73
75	2	3	99	10	30	10

# REFERENCE SIRES

## DOUBLE BAR D POL MANCHESTER

3702720 6/19/2017  
 BW 90 AWW 803  
 Polled Non-Diluter

The Pol Manchester sire is a type-changer, with his semen in limited supply and high demand, used to fix his deep, thick, big-bodied type, and his dark red heavily pigmented coat color. Daughters are broody, big-volume and easy-fleshing females.



We imported his semen from Quebec and have used him as our main AI sire on cows—to do what he does: to fix his type and create highly functional females. We look forward to breeding his first set of really classy polled daughters this spring. And there are two good sons—very much of his type—in this offering.

CE	WW	YW	MCE	MWW	API	TI
3	68	93	2	69	91	64
70	60	65	65	70	80	55

## SANMAR POLLED PHARAO 12P

2328741 1/13/2004  
 BW 88 AWW 807  
 YW 1371 Polled  
 Non-Diluter

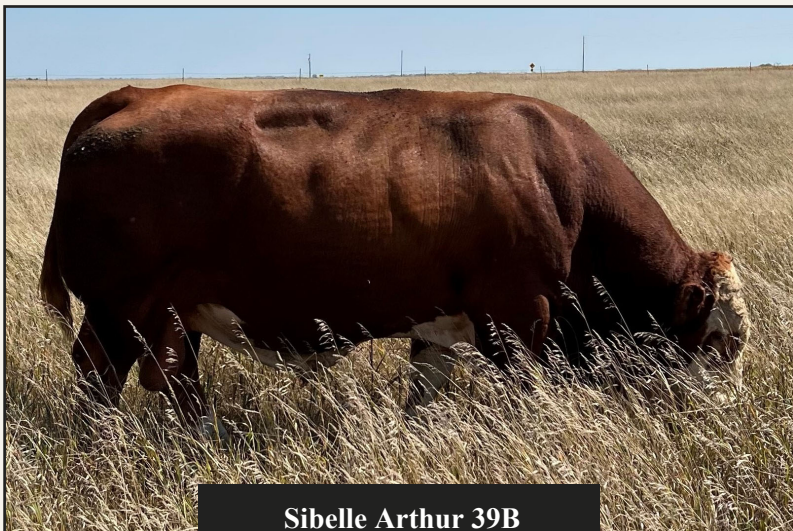
Pharao is an old Canadian bred bull that has become known in some of the best pedigrees for his calving ease, and moderate, big-middled females. We imported the last semen available for the US recently, to use again on heifers — and where his moderate stature would benefit big, powerful cows.



We have one good Pharao son, like his sire a calving ease prospect, on offer this year.

CE	WW	YW	MCE	MWW	API	TI
13	57	77	10	58	128	69
3	95	99	1	99	1	25





**Sibelle Arthur 39B**  
at 8 1/2 years

## **Breeding Soundness Guarantee**

Bulls will be semen tested and given a Breeding Soundness Evaluation by a licensed veterinarian prior to delivery. If a bull fails his evaluation, or is hurt before delivery, your deposit will be returned.

As per the ASA Standard Guarantee, bulls are guaranteed to be breeders (defined as the ability to settle healthy cows by the time the bull is 18 months of age) with the exception of:

- injury or disease occurring to the animal after time of sale
- gross negligence or willful misconduct on the part of the purchaser
- bulls shown competitively after sale

There is no guarantee that the bull will freeze semen. Seller will not be liable for any damages beyond either replacement or refund for a bull that is proven in his first season to be a non-breeder.

Please if your bull isn't breeding, let us know as soon as you confirm it so that we're aware of any problem with him.

