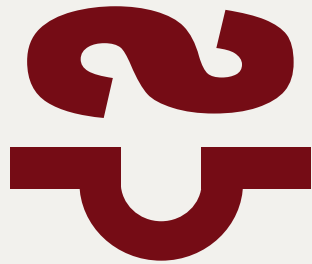


S/M FLECKVIEH CATTLE

Private Treaty Bull Sale

Jeff Sorenson

48186 257th Street
Garretson, South Dakota 57030
sorenson@augie.edu
605-359-8728 (cell)
www.smfleckvieh.com

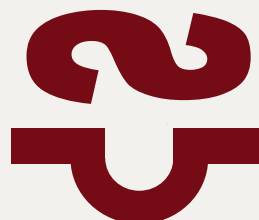


SIBELLE ARTHUR 39B

S/M FLECKVIEH CATTLE

2022 Sale Bulls

Welcome to the 2022 lineup of sale bulls at S/M Fleckvieh Cattle. These bulls are the product of **our 47th year** breeding Fleckvieh Simmental cattle, beginning in 1975.



Our Sale Bulls

Our investment in the best herdsires that we can find is evident in this set of bulls. They are for sale by private treaty beginning in late February, a few weeks later than previous years to give them more time to develop. They are pre-priced and available first come, first serve. A half-down deposit will hold your bull until we semen check in late April. We'll give them their spring pre-breeding shots, including Bovishield Gold, Pinkeye and Footrot vaccines, and deliver to you within 250 miles.

Expected Progeny Differences (EPDs)

We pay close attention to EPDs, aiming for a balance of the most important economic traits. After generations of breeding to lock in dependable genetics, you will see the results in the balanced EPDs of these bulls. There are calving ease bulls that also have good growth and maternal EPDs, and there are high growth bulls with useful calving ease and maternal trait EPDs.

A sample EPD chart
S/M Jackpot J192

CE	WW	YW	MCE	MWW	API	TI
8	75	110	10	71	106	67
15	35	20	1	65	20	35

On this sample EPD chart, the top numbers are the raw EPDs for each trait as calculated by the American Simmental Association. The bottom row of numbers are the animal's ranking among all fullblood cattle in the breed. For example, this bull is in the top 15% for Calving Ease, the top 20% for Yearling Weight, his Maternal Calving Ease is in the top 1%, and his All Purpose Index is in the top 20% for fullblood cattle in the ASA database.

Explanation of the EPD Chart

CE = Calving Ease Index
WW = added pounds Weaning Weight
YW = added pounds Yearling Weight
MCE = Maternal Calving Ease Index
MWW = added pounds Maternal Weaning Weight
API = All Purpose Index
TI = Terminal Index

The bottom number on the chart (with each bull) reflects the rank of that EPD, eg. an EPD ranking 20 is in the top 20% of Fullblood Simmental bulls.

Fullblood Fleckvieh Cattle

We breed Fullblood Fleckvieh Simmental cattle, whose genetics trace only to the original Fleckvieh of Germany and Austria where these moderate, beef-type Simmental cattle originated. Being Fullblood offers you maximum added heterosis, the “pop” from hybrid vigor when crossed with other breeds of cattle.

The Fleckvieh female’s moderate frame, natural easy fleshing and big volume capacity help her stay in good condition and rebreed on schedule year after year, on grass and poorer roughages.

Our Breeding Goals

We focus on economic traits that add to the bottom line:



- Type – big-volume, deep-fleshed cattle that are soggy, long and thick.
- Calving ease, both direct and maternal — in a range that works under commercial conditions.
- Females – tight udders with small teats, feminine, sound feet and legs, with the depth and barrel to thrive on grass and corn-stalks.
- Disposition – docile and easy to handle.
- Polled – as one of several important economic traits.
- Color – non-diluted dark red with lots of protective pigment.

Our Fullblood Fleckvieh Simmentals are run like commercial cattle, so we know how they work in the real world. We cull the calves hard for performance, disposition and soundness, and grow out only the best as sale bulls. They are developed slowly on a high-roughage diet of free-choice grass hay, a half oats/ half corn grain mix, and access to a Flaxlic mineral tub that boosts semen quality. They grow well but stay in their working clothes, so that they’re sound, fertile, ready to go to work — and will stand up for years of service for you.

Please check out our website at:
www.smfleckvieh.com. Text, email or give a call. I would love to talk about your program, and ours, and how we can help you breed for profit in the years to come.

Jeff Sorenson
605-359-8728 sorenson@augie.edu





S/M JEFFERSON J072

3915031

3/04/2021 BW 97 AWW 761/ 101 AYW 1342/ 104 Polled

Sibelle Dirty Harry 25Z
 FGAF Granger 060G
 Tryon Bonnie FF2E
 Sibelle Arthur 39B
 S/M Rita E072
 S/M Rena B041

Thick, thick, thick! When we first saw this broad-backed tank of a bull as just a baby, we knew we were onto something with our new herdsire, FGAF Granger 060G. It has been fun to see S/M Jefferson J072 grow up into a powerful young herdsire himself.

The second good bull to sell out of his young Arthur-sired dam, he'll be consistent in passing on his classic beefy type. A meaty, soggy polled Fleckvieh herdsire.

Non-Diluter



S/M Guardian G072
 (maternal brother)

CE	WW	YW	MCE	MWW	API	TI
8	73	103	5	73	108	69
15	45	40	20	50	15	20



S/M JUDAH J681

3915039

3/24/2021 BW 95 AWW 874/ 116 AYW 1409/ 110

Horned

Sibelle Dirty Harry 25Z
 FGAF Granger 060G
 Tryon Bonnie FF2E
 Crossroad Radium 789U
 S/M Zaila F681
 JNR Petra II

S/M Judah J681 represents what our new FGAF Granger 060G herdsire does. Out of a young second-calver that is very feminine in her type, Granger's influence provided extra middle, length and thickness throughout this bull.

Top weaning and yearling performance. A sweet disposition.

He will pack the pounds on his calves, without sacrificing anything in thickness, easy-keeping, and productivity in his daughters.

Non-Diluter



S/M Zaila F681

CE	WW	YW	MCE	MWW	API	TI
5	84	119	1	80	101	72
40	5	10	70	5	35	10



S/M JACKSON J281

3915040

3/08/2021 BW 88 AWW 774/ 103 AYW 1289/ 100 Homozygous Polled

Sibelle Dirty Harry 25Z

FGAF Granger 060G

Tryon Bonnie FF2E

S/M Diesel D141

S/M Jada F281

S/M Juliette X201

Homozygous polled Fullblood Fleckvieh bulls are a rare commodity, and homozygous bulls this attractive and of this quality are more rare yet.

S/M Jackson J281 is striking in his profile, soft in his make-up, and long, long, long. He is smooth made and tidy headed, with calving ease sires behind him, so should calve out well himself, too. J281 is out of a homozygous polled young dam with a big future, and is another reason we are so high on his sire, FGAF Granger 060G.



S/M Jackson J281 as a calf

Non-Diluter

CE	WW	YW	MCE	MWW	API	TI
7	68	96	3	74	100	66
25	65	60	45	40	40	40



S/M JACKPOT J192

3915058

2/13/2021 BW 72 AWW 796/ 106 AYW 1454/ 113 Horned

Siegfried
 ABR Sir Arnold G809
 ABR Shinagh Violet
 S/M Epic E581
 S/M Franchesca G192
 S/M Franchesca B142

When we went deep into the tank to put some ampules of Sir Arnold G809 in a handful of heifers, we knew that G809 can be trusted for calving ease and were hoping for females out of the great old bull. But here's a really good son instead.



S/M Franchesca G192

S/M Jackpot J192 calved unassisted out of a first calf heifer at only 72 pounds. Then with a top ratio at weaning and and number one at yearling, he offers a really wide spread of both calving ease and superior growth. And he's a big, long, strapping bull with a deep red color, lots of pigment and a really classy look. We think we hit the jackpot!

Tested Non-Diluter

CE	WW	YW	MCE	MWW	API	TI
8	75	110	10	71	106	67
15	35	20	1	65	20	35



S/M JUSTICE J541

3915056

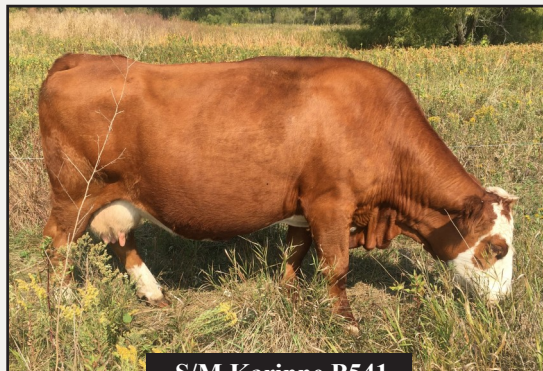
4/01/2021 BW 83 AWW 768/ 102 AYW 1297/ 101 Polled

Virginia Walker 97W
 Sibelle Arthur 39B
 Sibelle India 25W
 S/M Stout Z543
 S/M Karinne B541
 S/M Karinna W591

S/M Justice J541 is a flashy, dark red polled Fleckvieh bull, that also brings a nice balance with his moderate birthweight and above average weaning and yearling growth.

Another good son of Sibelle Arthur 39B, and out of a top producing homozygous polled cow who dammed one of our performance bulls last year also.

The bull is thick. He's well-balanced. He should sire a set of daughters that you're going to want to retain to improve your cowherd.



S/M Karinne B541

Non-Diluter

CE	WW	YW	MCE	MWW	API	TI
8	70	97	4	69	114	68
20	55	60	30	75	10	30



S/M JOSHUA J081

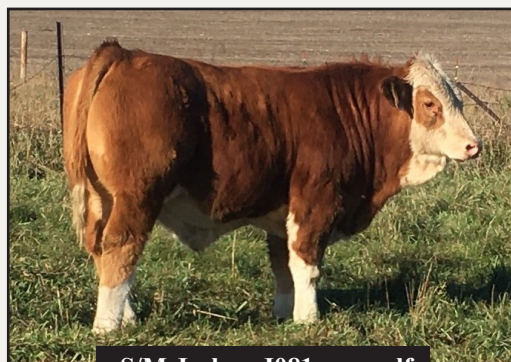
3915037

3/22/2021 BW 69 AWW 719/ 96 AYW 1206/ 94 Polled

Virginia Walker 97W
 Sibelle Arthur 39B
 Sibelle India 25W
 PHS Bank Roll 335B
 S/M Rose Ann F081
 S/M Rachel D061

Another polled heifer bull by his dam S/M Rose Ann F081, her second son with a birth-weight in the 60's. Her first calf was the good S/M Halfback H081 bull last year.

S/M Joshua J081 is a deep-bodied, moderate framed bull, sired by Sibelle Arthur 39B. His dam is moderate sized but big-bodied, a perfect tidy udder, an ideal female. His calves should come easy, and daughters will make functional, productive females.



S/M Joshua J081 as a calf

Non-Diluter.

CE	WW	YW	MCE	MWW	API	TI
11	61	84	7	66	122	67
10	90	90	10	90	3	35



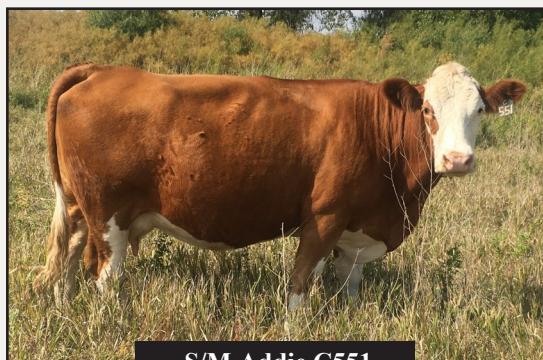
S/M JOHANN J551

3915035

4/02/2021 BW 104 AWW 792/ 106 AYW 1395/ 109 Horned

Virginia Walker 97W
Sibelle Arthur 39B
Sibelle India 25W
Emperor
S/M Addie C551
S/M Anna U581

Sibelle Arthur 39B doesn't miss. His eighth calf crop is arriving this spring — and the big old boy is eager to continue his positive influence for us. Sons like S/M Johann J551 are why we will stretch every calf crop out of him that he can offer.



S/M Addie C551

Just an April born calf, he has grown into a massive bull, that looks much like Arthur did when we brought him home from the Ferme Sibelle program in PEI as a yearling.

His feminine dam doesn't miss, either. It's fun when a pretty female like this, dams a bull this masculine and strong.

Tested Non-Diluter.

CE	WW	YW	MCE	MWW	API	TI
3	76	102	0	70	108	68
65	30	45	90	70	15	30



S/M JONATHAN J171

3915048

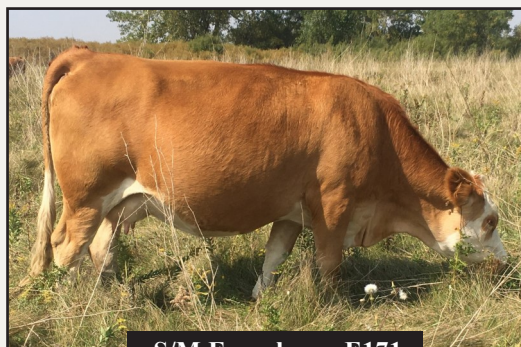
3/15/2021 BW 92 AWW 759/ 101 AYW 1224/ 95 Horned

Virginia Walker 97W
 Sibelle Arthur 39B
 Sibelle India 25W
 PHS Bank Roll 345B
 S/M Franchesca E171
 S/M Franchesca W191

A solid, useful Sibelle Arthur 39B son, the second good bull by his attractive, feminine young PHS Bank Roll 345B dam.

S/M Jonathan J171 is a thick-topped, big-butted, big-middled bull, soft in his makeup, quiet and easy to be around. A moderate, beefy bull that will beef up your calves and work hard for you.

Non-Diluter.



S/M Franchesca E171

CE	WW	YW	MCE	MWW	API	TI
4	65	90	3	68	107	64
50	80	80	50	60	20	60



S/M JURIST J361

3915054

4/14/2021 BW 89 AWW 729/ 97 AYW 1191/ 93 Polled

Virginia Walker 97W
 Sibelle Arthur 39B
 Sibelle India 25W
 Anchor T Legend 7H
 S/M Ursa D361
 PHS Yuma

The youngest of our bulls on offer this year, S/M Jurist J361 is super long and attractive. As smooth made as he is, with a tidy head, he will be one of the easier calving bulls on offer this year.

His dam clicks well with Sibelle Arthur 39B. This is her third calf by this mating, the first polled calf. She herself is an Anchor T Legend 7H daughter (a premier calving ease sire), and by PHS Yuma, dam of the PHS Bank Roll 345B bull owned by Semex and who has sired a productive set of females for us.

Non-Diluter.

CE	WW	YW	MCE	MWW	API	TI
8	67	93	5	69	125	69
15	70	75	20	75	2	25



S/M JASPER J492

3915050

3/12/2021 BW 93 AWW 762/ 102 AYW 1198/ 93 Horned

Crossroad Radium 789U

IPU Radium 20A

IPU Ms Laredo 107Y

Sibelle Arthur 39B

S/M Cynthia G492

S/M Callista C452

S/M Jasper J492 is an attractive, dark red, blaze-faced son of IPU Radium 20A, a real knock-off of his sire. Heathe Widicker of James Creek Simmentals and I co-owned Radium and successfully used him on heifers for years, selling many good sons and retaining some beautiful, productive daughters.

Out of a bigger framed first-calf heifer by Sibelle Arthur 39B, his young dam put some punch in this bull.

Non-Diluter.



IPU Radium 20A

CE	WW	YW	MCE	MWW	API	TI
5	77	101	5	75	100	67
40	20	45	25	35	40	35



S/M JONAH J122

3915046

3/03/2021 BW 108 AWW 811/ 108 AYW 1418/ 110 Polled

**Emsig
Emperor
351**

**FSS Xtra Stout 20X
S/M Franchesca Z122
S/M Franchesca W191**

S/M Jonah J122 will be the last of many bulls we have offered over the years by Emperor, one the original polled sires from the German state program in the late 1980's. We found Emperor to be the best of those original sires, giving us a number of polled females that milked well and with udders that held up, sound feet and legs, good dispositions, and more power and thickness than some of those early imports. Sadly, this calf is from the last of that old semen.

His dam S/M Franchesca Z122 has been a powerhouse cow for us, every son a sale bull and several daughters retained as some of our best females. The calf himself is a big strapping fellow (but note the birthweight) and will add pounds for you.

Tested Non-Diluter

CE	WW	YW	MCE	MWW	API	TI
0	73	99	-3	71	90	63
90	40	55	99	65	75	70

S/M FLECKVIEH CATTLE

2022 Private Treaty Bull Sale Prices

Thank you for taking a look at our 2022 Sale Bulls. They are available for sale by private treaty, first come, first served at a pre-set price. A check for half down will hold your bull until late April, when we semen check and give a breeding soundness exam, give spring shots and can deliver up to 250 miles to you.

These are the prices of the 2022 bulls:

S/M Jefferson J072	\$ 6,000
S/M Judah J681	\$ 5,000
S/M Jackson J281	\$ 5,000
S/M Jackpot J192	\$ 6,000
S/M Justice J541	\$ 5,000
S/M Joshua J081	\$ 4,000
S/M Johann J551	\$ 4,000
S/M Jonathan J171	\$ 4,000
S/M Jurist J361	\$ 3,000
S/M Jasper J492	\$ 3,000
S/M Jonah J122	\$ 4,000

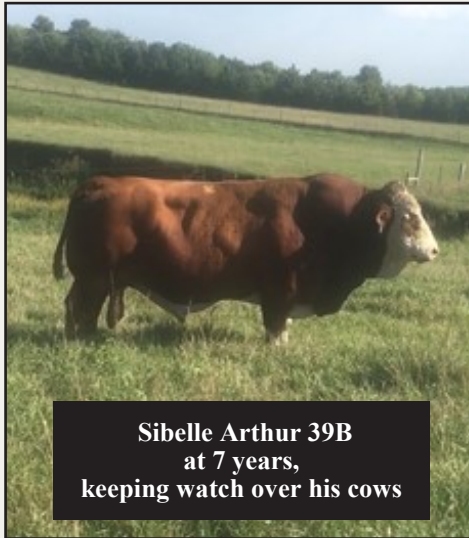
Jeff Sorenson

605-359-8728 sorenson@augie.edu

website: www.smfleckvieh.com

BULL CARE

We have learned from experience and that of our customers, some tips for care of your bull that can help him to serve you well, grow into a healthy and athletic mature sire, and last for years successfully doing what you invest in him to do.



Sibelle Arthur 39B
at 7 years,
keeping watch over his cows

Adapt him gradually to his new environment. Your yearling bull has been fed a moderate, growing ration that includes some grain, gaining 3+ pounds daily. You should aim to keep him growing until turnout at 2 -2.5 pounds per day. Decrease the grain in his ration gradually to let him “harden up.” He’ll hold up better through the breeding season and successfully breed more cows, if you do.

Let him be a yearling his first season. As a yearling, give him no more than one cow per month

of his age at turnout. Watch to see that he is mounting and servicing cows. Don’t turn him in with mature bulls; if they fight he could get hurt, or they might intimidate him into avoiding the cows you want him to cover. Don’t leave him in more than your 60-90 day breeding season; he’ll waste energy chasing cows (energy he’ll need to begin rebuilding for the next season).

Protect him from flies and parasites. We use IGR tubs to control flies, but yet on pasture-checks the bulls often will be found fighting flies. Any flies in the environment will be on and biting him. We want him breeding cows, not preoccupied with flies, so I carry a hand-sprayer with an oil-based insecticide and give my bulls a quick spray-down when needed. We give our bulls all the parasite controls that the cows get – plus a feed-based wormer before the winter feeding season.

Safeguard his temperament. We select for a docile temperament in our bulls. But they’re still bulls, and their disposition can go sour if they’re mistreated. Temple Grandin teaches us that a docile bull can become dangerous out of fear, and male aggression. Shouting and electric prods cause fear. The bull can become aggressive if you get too friendly with him, too. Touching his head is too much like head-butting with other bulls. It can make him lose a healthy respect for humans and come to think of you as competition that needs to be fought off.

Provide adequate nutrition into his second year. The months from bull-pull as a yearling until he goes out again as a 2-year-old are the most critical time nutritionally for a young bull. He has to gain back what he lost, and more. His frame is still growing. If he was active chasing cows (and many will work themselves to exhaustion before they learn how to pace themselves) he will have lost condition that must be regained to be healthy and successful when mature. So aim for him to grow to 75% of his mature weight by his second birthday.

But don't overfeed him as a mature sire. An older Fleckvieh bull will get too heavy to be athletic, travel and breed well if he's overfed once mature. Excess weight will just add to stress on his joints and make him slower moving. Our mature bulls are wintered on free-choice good grass hay and a Flaxlic mineral tub that also helps semen quality.

Keep him dry, well-bedded, protected from cold winds. Your bull is bred to be durable and tough – but his feet and testicles, needed to do his work next spring, are susceptible to freezing if not protected. He's more vulnerable to the elements than he looks. Protect him, please.

Check him annually to be sure he's sound and ready to work. His feet shouldn't need attention unless he's been injured, but observe him walking out to be sure. Give him a BSE with a semen evaluation every spring. He will be sound when delivered – but a lot can go wrong in a year. Be sure he's able to do his job, and he'll do well for you.

Breeding Guarantee

Bulls will be semen tested and given a Breeding Soundness Evaluation by a licensed veterinarian prior to delivery. If a bull fails his evaluation, or is hurt before delivery, your deposit will be returned.

As per the ASA Standard Guarantee, bulls are guaranteed to be breeders (defined as the ability to settle healthy cows by the time the bull is 18 months of age) with the exception of:

- * injury or disease occurring to the animal after time of sale
- * gross negligence or willful misconduct on the part of the purchaser
- * bulls shown competitively after sale

There is no guarantee that the bull will freeze semen. Seller will not be liable for any damages beyond either replacement or refund for a bull that is proven in his first season to be a non-breeder.

Please if the bull isn't breeding, let us know as soon as you confirm it so that we're aware of any problem with him.

REFERENCE SIRES

SIBELLE ARTHUR 39B

2981208 3/19/2014
 BW 112 AWW 907
 YW 1613 Horned
 Non-Diluter

Sibelle Arthur 39B sires what we expected when we invested in this great sire: volume, power, thickness. His sons are powerful beef bulls. Daughters are feminine with excellent udders, and pass on his beef type to their calves.

Philippe Bellevance of Ferme Sibelle claimed Arthur may be the best son of Virginia Walker, his senior herdsire, and we agree. Arthur at eight years is still sound, big-footed, in great shape and looks better every year.

Arthur has five sons and two grandsons on offer this year. Semen available for the US, Canada, Mexico and the EU.



CE	WW	YW	MCE	MWW	API	TI
7	71	98	4	69	111	68
25	45	55	35	80	15	25

FGAF GRANGER 060G

3739260 1/31/2019
 BW 88 AWW 785
 YW 1361 Polled
 Non-Diluter

This is our first set of calves by FGAF Granger 060G. We purchased Granger as the high-selling bull in Ferme Gagnon's 2020 sale to moderate frame (he's a frame 4.6) and to add thickness. He does that. But he's also easy calving, and has powerful growth far beyond his own phenotype.

Granger is sired by Sibelle Dirty Harry, who makes his progeny stout, soft and soggy. His polled dam is a deep-sided, thick yet feminine young female with a huge future ahead of her at FGAF. This young sire has a lot of upsides; we're confident that Granger is going to be a game-changer.

Semen available.



CE	WW	YW	MCE	MWW	API	TI
2	71	103	-1	74	96	67
80	50	35	95	40	60	30

FUTURE SIRES

KUNTZ KINGPIN 2H

3968312 **1/05/2020**
BW 104 **AWW 836**
YW 1666 **Polled**
Non-Diluter

Kuntz Kingpin 2H stood out as the most powerful, deep and stout polled Fleckvieh bull of the 2021 sale season. So we brought this high seller home from Saskatchewan to South Dakota.

We expect Kingpin to pass his performance and power to a classy set of bull calves. His maternal genetics should give us productive, useful daughters as well: his dam Miss Moses 308A is a broody tank of a cow, with three other sons already serving in herds across Canada. His first calves are due in 2022.

US semen available.



CE	WW	YW	MCE	MWW	API	TI
4	88	130	2	82	103	74
45	2	2	60	3	30	10

DOUBLE BAR D DOUBLE DOWN 142H

3968313 **3/05/2020**
BW 94 **AWW 1055**
YW 1575 **Horned**
Non-Diluter

We renamed this massive son of Anchor D Motown 865E, for what we expect him to do for us: Double Down on the thickness, muscle, barrel and top and correctness exhibited in this young bull.

His sire Motown is building a reputation at Double Bar D for progeny that are big-middled, deep-fleshed, the ideal Fleckvieh type. Double Down was number one at both weaning and yearling performance among his herdmates in the huge DBD herd, no accident as he's also out of a big-bodied, high-performing Juggernaut daughter. Watch for his first calves here in 2022.



CE	WW	YW	MCE	MWW	API	TI
5	78	116	0	76	109	71
35	20	10	80	25	15	15

