

S/M FLECKVIEH CATTLE

Private Treaty Bull Sale

Jeff Sorenson

48186 257th Street
Garretson, South Dakota 57030

sorenson@augie.edu

605-359-8728 (cell)

www.smfleckvieh.com

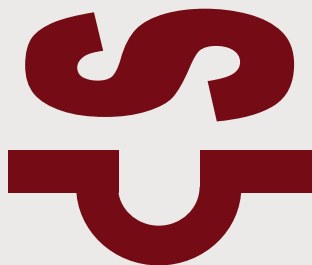


SP

S/M FLECKVIEH CATTLE

2018 Sale Bulls

Welcome to our lineup of 2017 born sale bulls at S/M Fleckvieh Cattle. Each year we aim high to keep improving what we offer for you, and it is certainly true this year. We had two-thirds heifer calves last spring, and are very select about the calves that go into the bull development lot, so our numbers of sale bulls available are limited this year. But these guys are some good rascals.



These bulls are the product of **our 43rd year** of breeding Simmental cattle, beginning in 1975. We are a long-term, select program providing functional, dependable breeding cattle aimed at supporting your beef breeding goals.

This year's bulls include the second set of sons from a sire line new to us, and we couldn't be happier with them. They bring some real punch and dimension, without sacrificing calving ease. Our main herdsire, *Sibelle Arthur 39B* has now proven to be the most powerful breeding son of *Virginia Walker 97W*, a highly sought after Fleckvieh sire line in North America today. We AI to a polled Walker grandson, *PHS Bankroll 345B*.

Our bulls are for sale by private treaty beginning in February. They are pre-priced, and sell first come, first serve. Over the years we've found that our customers like to know what you will pay, and that the bull is yours at that price. A half-down deposit will hold your bull for you until we semen check in mid-April. We prefer to grow the bulls out and test their fertility before delivery to you. We'll give him his spring pre-breeding shots, including Bovishield Gold, Pinkeye and Footrot vaccines, and deliver to you within 300 miles.



Arthur son at 14 months
ready for harvest

Our Fullblood Fleckvieh Simmental cows are run like commercial cattle, so we know how they perform in the real world. We cull the calves hard for their performance, disposition and soundness, and grow out only the best as sale bulls. They are developed on a high-roughage diet of free-choice grass hay, a pound per hundred of half corn/ half oats, and access to a Flaxlic mineral tub that we've found maximizes semen quality in these bulls. They grow well but stay in their working clothes — so that they're sound, fertile and ready to go to work for you. All are DNA tested non-dilutors, good for use on black cows.

Our Breeding Goals

We breed for economic traits that add to the bottom line:

- By type – moderate framed, big-volume, deep-fleshed cattle that are soggy, long and thick-thick-thick.
- Calving ease – both direct and maternal – in a range that works under commercial conditions.
- Females – tight udders and small teats, feminine, sound feet and legs, with the depth and barrel to thrive on grass and corn-stalks.
- Disposition – completely docile and easy to handle.
- Polled – as one of several important economic traits.
- By style – dark red with lots of protective pigment.

Fullblood Fleckvieh Cattle

We breed Fullblood Fleckvieh Simmental cattle. Their pedigrees trace 100% to Original Fleckvieh in the herdbooks of Germany and Austria, where these moderate, beef type Simmental cattle originated. This genetic purity gives bred-in consistency and offers you the maximum added “pop” from hybrid vigor when crossed with other breeds of cattle.

Efficiency, more pounds of choice beef at least cost, and sound, long-lasting functional females —these are necessary for year after year profit. We’ve found Fleckvieh cattle to be perfectly suited to these needs. Their high growth but moderate frame, natural easy fleshing and big volume capacity help the producing female stay in good condition on grass and poorer roughages. This ability also helps the feeder finish to grade with less need for expensive grains — growing a valued, desirable product for the consumer, and at a lesser cost to you.

Come, have a look. Please check out our website: **www.smfleckvieh.com**. Text, email or give a call. I would love to talk about your program, and ours, and how we can breed for profit in the years to come.



Jeff
Sorenson

605-359-8728

sorenson@augie.edu

Explanation of the EPD Chart

CE = Calving Ease
WW = added pounds Weaning Weight
YW = added pounds Yearling Weight
MCE = Maternal Calving Ease
MWW = added pounds Maternal Weaning Weight
API = All Purpose Index
TI = Terminal Index

The bottom number on the chart (with each bull) reflects the rank of that EPD, eg. an EPD ranking 30 is in the top 30% of Fullblood Simmental bulls.



S/M ENGINEER E451

3299306

2/26/2017 BW 75 AWW 769/99 Polled Tested Non-Dilutor

Crossroad Radium

IPU Radium 20A

IPU MS. Laredo 107Y

Kuntz Impact 7Z

S/M Delilah C451

S/M Dixie T471

S/M Engineer E451 is a liver red, moderate framed, super thick calf that should be safe for calving, yet give you some real beefy calves. He goes back four generations of S/M Fleckvieh walking herdsires that we trusted for calving ease. Behind that, he goes back to the Miss Arnold H9003 matron of the Arnold Bros. program on which the cow family of his dam is built.

E451 was born unseen and unassisted from a first-calf heifer that worked really hard and weaned him off at 79% of her own body weight (that's the kind of female that Kuntz Impact 7Z has given us). Wide based, wide-topped, lots of middle and muscle. He's quiet, friendly, polled, tested non-dilutor, a little extra age and ready to go to work.

CE	WW	YW	MCE	MWW	API	TI
6.2	64.7	85.2	5.8	65.0	86.3	58.4
30	65	75	50	60	50	60



S/M ELIJAH E141

3299308

3/27/2017 BW 93 AWW 791/103

Polled

Tested Non-Dilutor

Virginia Walker 97W

Sibelle Arthur 39B

Sibelle India 25W

Anchor T Legend 7H

S/M Franchesca B141

S/M Franchesca Z121



**S/M Franchesca B141
@ first calf**

S/M Elijah E141 is a breeder's bull. If we weren't just beginning to use his sire, Sibelle Arthur 39B, this young bull wouldn't leave our place. He's the image of his high-performing sire, with a polled head.

E141 is the second polled bull in as many years from his beautiful young polled Legend-sired dam, Franchesca B141. Her first calf, S/M Diesel D141 we sold 1/2 interest to Stanley Martins of Iowa, and use together on our fullblood females. Four generations of S/M Fleckvieh breeding, back to the legendary Dora Lee Franchesca. Balanced EPD's. A sweet disposition. Power and length and thickness. Ready to take your program to the next level.

CE	WW	YW	MCE	MWW	API	TI
4.8	75.1	105.5	7.1	71.0	102.9	66.2
45	20	20	45	15	10	10



S/M EZRA E17

3299285

4/08/2017 BW 83 AWW 825/107

Horned

Tested Non-Dilutor

Virginia Walker 97W

Sibelle Arthur 39B

Sibelle India 25W

BLI Warlord 915W

PHS Yuma

FGAF Precious Thing 402T

What a genetic combination. Sired by the breakthrough Fleckvieh sire Sibelle Arthur 39B, and mothered by PHS Yuma, makes him a maternal and 3/4 brother to PHS BankRoll 345B.



PHS Yuma

When BankRoll sold in the PHS dispersal, we knew we had to use him in our program—and that we also needed to own his beautiful dam. We followed that up with the purchase of Sibelle Arthur, who shares the Virginia Walker sire with Sibelle Dirty Harry (sire of BankRoll). Ezra E17 is the result of mating these two genetic foundations.

Combining a very moderate birthweight, powerful growth, stretch, both middle and muscle, a great disposition and balanced EPD's, S/M Ezra E17 is a breeder's bull.

CE	WW	YW	MCE	MWW	API	TI
4.3	79.8	111.0	3.7	68.0	105.6	69.5
50	10	10	70	35	4	3



S/M EQUALIZER E192

3299295

3/17/2017 BW 92 AWW 783/102

Horned Tested Non-Diluter

Sibelle Dirty Harry 25Z

PHS Bank Roll 345B

PHS Yuma

Bar 5 SA Harrach 801P

S/M Franchesca W192

Dora Lee Franchesca

S/M Equalizer E192 illustrates why we love his sire, PHS Bankroll 345B so much. From day one he's always had "the look," like his fancy sire.



Equalizer E192's dam is a direct daughter of the famed Dora Lee Franchesca, foundation of a premier and sought after female line in Fleckvieh cattle. With his paternal grandmother being PHS Yuma (see opposite page), count on him siring daughters that you will want to keep.

We aim to breed 'em long and low and thick. That certainly describes this powerful, attractive bull calf.

CE	WW	YW	MCE	MWW	API	TI
4.6	70.9	99.4	7.7	68.1	96.2	62.2
45	35	35	35	35	20	30



S/M ENCORE E482

3299298

4/02/2017 BW 93 AWW 786/102

Horned

Tested Non-Diluter

Anchor T Impact 2H

Kuntz Impact 7Z

Kuntz Miss Moses 03X

Virginias RedMarciano FF

S/M Hermione U482

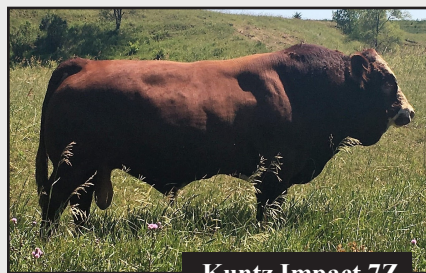
S/M Hanna S462

Long as a freight train, lots of middle, dark red, blaze-faced and gentle describes S/M Encore E482. That also describes both of his parents, his productive dam S/M Hermione U482 and his highly proven sire Kuntz Impact 7Z.

Encore E482 is a big calf, with plenty of performance, so will add lots of stretch and pounds to his calves. Our only Impact bull calf this year.



S/M Hermione U482



Kuntz Impact 7Z

CE	WW	YW	MCE	MWW	API	TI
3.0	69.2	98.2	4.3	68.9	93.4	61.9
65	45	35	65	30	25	35



S/M EQUATION E452

3299283

4/18/2017 BW 93 AWW 795/103

Horned

Tested Non-Dilutor

Crossroad Radium 789U

IPU Radium 20A

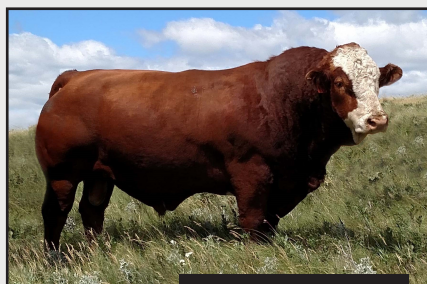
IPU Ms Laredo 107Y

Anchor T Legend 7H

S/M Callista C452

S/M Carissa Y413

S/M Equation E452 is a later born calf, born unassisted from a first-calf heifer, that can work as a calving ease bull himself. He is smooth, athletic, moderate framed and attractive like his sire, IPU Radium 20A.



IPU Radium 20A

His young polled dam, S/M Callista C452 is dark red, feminine, beautifully uddered, and given her first calf has a productive future here. Behind her is the cow-maker Anchor T Legend 7H, and a Bar None Shareholder cow, S/M Carissa Y413 that always brings in the big ones. If you want to create replacement females that calve and maintain themselves easily, and punch out top calves, Equation E452 will work for you.

CE	WW	YW	MCE	MWW	API	TI
6.3	75.3	100.6	9.4	70.8	91.3	63.3
25	20	30	25	20	35	25

REFERENCE SIRES

SIBELLE ARTHUR 39B

2981208 3/19/2014

BW 112 AWW 907

YW 1613

Horned Non-Dilutor

Arthur now ranks in the top 3% of all Fullblood sires for both growth traits and both economic indexes (see chart below). His calves are born easy, then they explode with growth.



Each year as more progeny enter the ASA database, BOTH his calving ease AND growth numbers keep going up. Arthur is now the highest performing son of Virginia Walker 97W, whose sons have taken the Fleckvieh breed by storm for their combination of workable calving ease, powerful growth, natural thickness, and attractive, rugged pattern to them. Semen available for USA, Canada and EU.

CE	WW	YW	MCE	MWW	API	TI
2.6	84.2	118.2	2.4	71.2	108.0	69.7
70	3	3	80	15	3	3

KUNTZ IMPACT 7Z

2744484 1/26/2012

BW 96 AWW 766

YW 1353

Horned Non-Diluter

Kuntz Impact 7Z came to us as the high seller in the 2013 Kuntz sale. His dam, Miss Moses, has since made history with sons heading up prominent Canadian Fleckvieh herds.



Impact's daughters are just what we purchased him for: feminine, moderate, easy-keeping, perfect udders. They're dark red, solid patterned, mostly blaze-faced like their sire. Easy calving enough to use on heifers. Semen for sale on this proven sire.

CE	WW	YW	MCE	MWW	API	TI
6.3	56.6	80.8	3.8	66.2	93.7	58.0
25	90	85	70	50	25	65

REFERENCE SIRES

IPU RADIUM 20A

2920267 1/18/2013

BW 96 AWW 818

Horned Non-Diluter

We own Radium 20A with Heathe Widicker, James Creek Simmentals. We purchased him from Barry LaBatte to use together on heifers, and he has fit that bill well for us.

But he also gave us powerful growth in his sons, and feminine, attractive daughters as well. He is consistent for passing on his solid dark liver color, red right down to his feet. Heathe and I have semen for sale on Radium.



CE	WW	YW	MCE	MWW	API	TI
5.0	73.3	93.4	5.9	66.7	76.7	58.1
40	25	50	45	45	80	60

PHS BANKROLL 345B

3047163 3/15/2016

BW 96 AWW 861

Polled Non-Diluter

Wouldn't you like a crop of calves that look like this guy? When Semex bought BankRoll as a calf on the PHS dispersal, we bought his mother — and then began AI breeding to the bull.

His calves come easy enough that we depend on him for heifers, then take off and grow out to be just as fancy as their sire. He works really well on big framed cows, moderating frame and adding dimension and softness. His first daughters will soon calve: they're beautiful like his mother.



CE	WW	YW	MCE	MWW	API	TI
5.5	67.8	95.2	5.2	66.4	98.7	60.2
35	50	45	55	45	15	45

S/M Fleckvieh Cattle
Jeff Sorenson
48186 257th Street
Garretson, SD 57030

