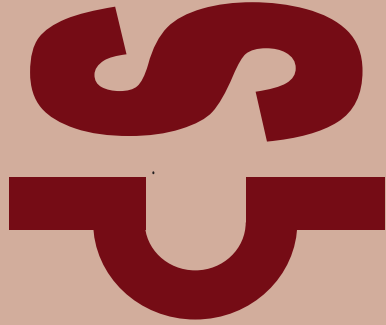


# 2011 SALE BULLS



**S/M FLECKVIEH CATTLE**  
**Jeff Sorenson**

**Garretson, South Dakota**  
**sornson@augie.edu**  
**605-359-8728 or 605-594-3789**  
**www.smfleckvieh.com**

**S/M Romeo R113**



CE	WW	YW	MCE	MWW	API
6.9	31.5	50.7	8.8	35.4	73.8

**S/M Moderator Y445 Homo/Polled ASA 2593811**

Born 4/22/11      BW 92      AWW 730 107 5/20

**Grinaltas Excel 8N**

**S/M Romeo R113**

**IPU 4G Franchesca 113M**

**S/M Moderator Y445 (Homozygous Polled)**

**Sir Arnold L5865**

**S/M Diana P445**

**S/M Miss A411**

Homozygous polled. A young herdsire with a real future. Where else this combination of calving ease, style, thickness, moderate frame, quiet nature, maternal power and homozygous polled DNA. Moderator has the breed greats behind him — it comes naturally.





CE	WW	YW	MCE	MWW	API
0.9	39.3	58.6	3.9	32.3	64.7

**S/M Yosef Y971      Polled      ASA 2593815**

Born 3/19/11      BW 102      AWW 727 107 6/20

**ABR Sir Arnolds Image**

**Sanmar Polled Pharaoh 12P**

**Sanmar Pol Teardrop 12M**

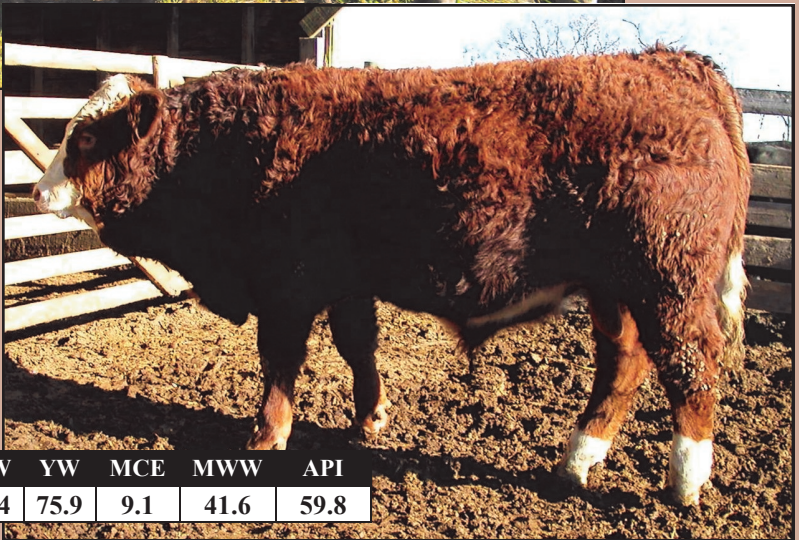
**S/M Yosef Y971**

**Spruceburn Prestige 113P**

**S/M Vera T971**

**Virginias Ms Michigan**

Powerful polled calf, muscled, thick and attractive. Out-cross genetics for your polled program. If he creates daughters like his young dam, they'll be good-uddered, deep-bodied and thick, thick, thick.



CE	WW	YW	MCE	MWW	API
-2.8	46.4	75.9	9.1	41.6	59.8

**S/M Yardline Y14**

**Horned**

**ASA 2593816**

Born 3/15/11

BW 110

AWW 762 112 3/20

**Anchor T Ikon 1H**

**HEMR Samurai 7S**

**JB CDN Kananaskis 4019**

**S/M Yardline Y14**

**NAC Union's Legacy 29L**

**Grinaltas Scarlet PFF 14S**

**Grinaltas Trendsetter**

Thickness, power, lots of beef stacked up in Y14. His young dam weans a top calf every year. He just gets better daily. Yardline is maturing into a massive, soggy herdsire.